



The Secret to a Fast, Seamless Google Workspace Migration

March 19th, 2024



Welcome!

Over the next 45 minutes, we will be taking you through the customer journey process and will discuss:

- Assessing your organization's readiness for a migration
- Overcoming common challenges and pitfalls
 - Minimizing downtime and disruption during the transition
- Optimizing Google Workspace post-migration to drive productivity and collaboration
- Q&A session with our presenters

promevo[™]

cloud**m**

Meet Our Presenters



Chris Cockton

**Head of Support and
Services**

CloudM



Colin McCarthy

**Change Management
Leader**

Promevo

promevo™

With the expertise, agility, and commitment you can only get from a partner that is solely 100% Google-focused, Promevo is with you every step of the way, enabling your organization to have the best Google life experience possible.

We **Sell**, We **Service**, and We **Build** Google Products



Google Cloud

Google Workspace



- **14-Year Google Partnership**
- **Dedicated** Customer Success Team and **Google-Certified** Technical Support Teams
- Ability to drive **license and GCP consumption discounts**
- Custom IT Solutions across **Application, Cloud, and Data Services**
- **Centralized Billing** for all your Google Products and Services
- Proprietary **Google Workspace management platform**

Partnering to Drive Innovation



CAMEYO

cloudm



About CloudM

CloudM provides you with an easy to use platform to own and control your organization's Google Workspace data. Our products are purpose-built for Google to enable you to:

- Ensure business continuity and boost agility.
- Improve governance and data resilience.
- Save time and money by automating repetitive manual tasks such as onboarding and offboarding.

With over 80 million completed migrations in 107 countries, CloudM's industry-leading software is the platform of choice for moving, archiving and securing data through reliable backups.



Google Cloud Premier Partner



Over 80 Million Migrations



107 Countries

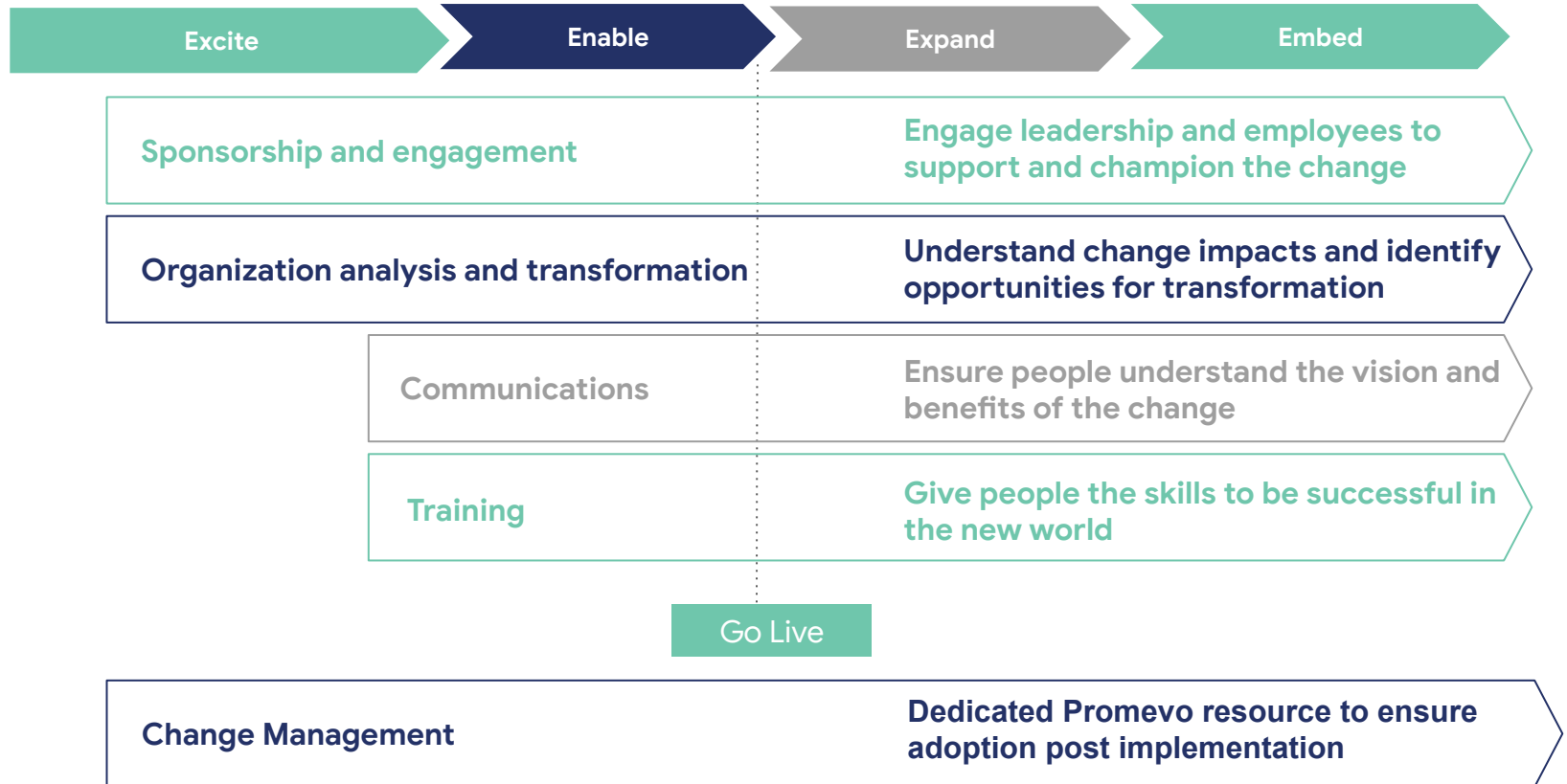


Over 45,000 Customers

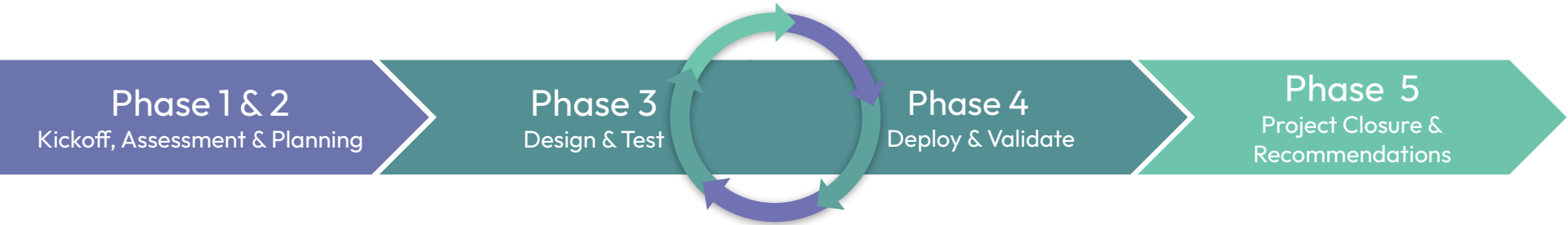


Dedicated Teams in Europe, USA and APAC

Change Management Methodology



Google Workspace Migration Approach



Phase 1 & 2

Kickoff, Assessment & Planning



Workshops to assess and plan

- Document requirements
- Understand team and data boundaries
- Prioritization of teams and apps
- Client resource allocation and planning for cohesive delivery

Delivery

- Define project roadmap with milestones and epics
- High level estimation

Options to Suit Every Business

Self-Hosted



-
- For complete control
 - Data sovereignty for sensitive customers
 - Reporting & statics
 - Bespoke scaling
 - A more secure implementation

SaaS



-
- 100% SaaS
 - Less complex set up
 - Productive & self service
 - Auto Scalable
 - Dedicated VM assigned
 - Reporting & statistics

Archives



- Exchange Online Archives
- Outlook PST files
- MBOX/EML files
- Google Vault



Google Vault

Mail



- Exchange Online
- Exchange On-Premises
- Mail enabled Public Folders
- Google Mail
- Zimbra
- IMAP
- Lotus Notes
- GroupWise



Gmail

Files



- OneDrive for Business
- SharePoint Online document libraries
- Microsoft File System
- SharePoint On-Premises
- Google Drive
- Dropbox
- Box



Google Drive
Shared Drives

Collaboration



- Teams
- M365 Groups



Gmail Drive
Spaces (coming soon)

Phase 3 Design & Test

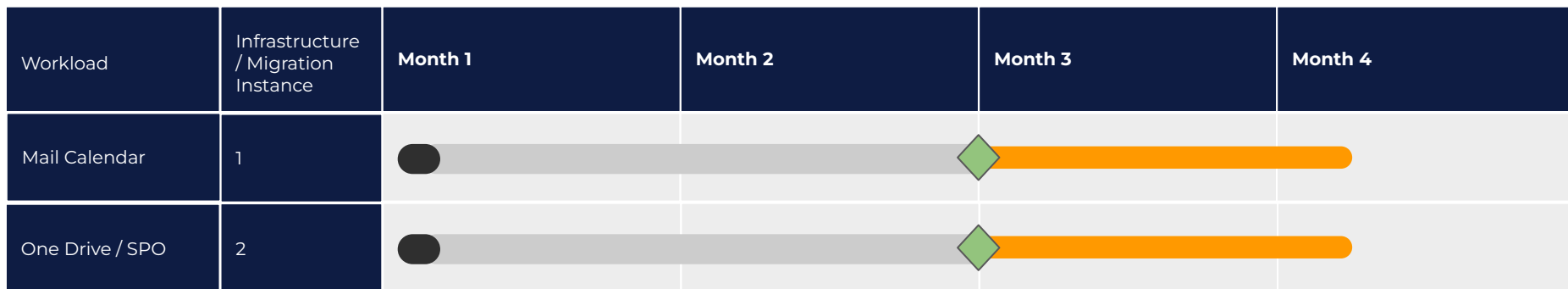
- Iterative approach to move to Workspace
- Design Architecture
- Map teams and resources to Workspace services
- Create migration plan
- Dry run and validate a successful migration
- Review security & compliance





Phase 4 Deploy & Validate

- Schedule Cutover
- Deploy to Workspace for Production
- Validate migration

Scalability / Adaptability

Example of how CloudM Migrate can be used to meet large workload requests or complex migration requirements



-  User go-live
-  Infrastructure setup
-  Bulk Migration
-  Post go Live Migration

Phase 5

Project Closure & Recommendations

- Project review and closure
- Knowledge transfer and deliverables
 - Workspace Training & Runbooks
- Promevo managed services
- Recommendations
 - Cloud application recommendations
 - Security improvements
 - Opportunities for modernization
- Future road-map



Getting Started

Interested in learning more about Migrations?

New Clients: Go to <https://promevo.com/contact-sales-google-workspace>

Existing Clients: Email your CSM or clientsuccess@promevo.com

Promevo is your go-to for initiating any Migration needs.

We provide:

- **Comprehensive approach**
 - CS or Sales Team Member
 - Technical Support Project Manager
 - Change Management Leader
 - Liaison between Promevo, CloudM and Google
 - Post migration support
- **Competitive offers**
 - When applicable, negotiation with Google for funds or pricing of your new environment
 - Competitive pricing on services
- **Consistency**
 - Communicated timelines and clear expectations outlined in a project plan
 - Post migration report
 - CloudM's top notch products partnered with Promevo services provide your team with the best support

Contact Us

promevo™

promevo.com

promevo.com/gPanel

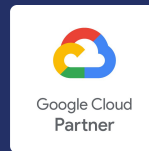
linkedin.com/company/promevo/



Read our latest blog on Migrations:

[Simplify Your Google Workspace Migration
with Promevo and CloudM](#)

Upcoming Webinars



ChromeOS Flex

The Secret to a Fast,
Seamless Google
Workspace Migration

April 16th
Coming Soon!

gPanel® Office Hours A Promevo Webinar Series



Session 6: Signature
Templates

April 9th
[Register Here](#)

Session 7: gPanel API

May 7th
[Register Here](#)



Questions?

Thank you for joining us!

Google Workspace



promevo™

cloudm